
Chicago Ridge Public Library Facility Plan

2019

Overview Facility Plan



Background

- Community 4
- Library 5-6

Space Needs Assessment

- Library Building 8
- Feedback 9
- Challenges 10-14

Project Design

- Recommendations 16-19
- Architectural Renderings 20-33

Chicago Ridge Public Library Background

Chicago Ridge Community

- The village of Chicago Ridge is a lower middle class inner suburb of the city of Chicago located 20 miles southwest of downtown Chicago in Cook County with an area of 2.25 square miles.
- We are a diverse community of 14,338 residents.
 - 45.6% of Chicago Ridge residents speaks a language other than English at home.
 - Arab-Americans comprise 23.8% of Chicago Ridge residents, while Latinx comprise 11.3% and African-Americans comprise 10.8%.
- 29.3% of residents are under 18 years old, compared to 21.8% of residents of Cook County.
- There are 5,050 households in Chicago Ridge with a median income of \$44,221.
 - Home ownership is at 52.2%.
 - The poverty rate for Chicago Ridge is 25.7% compared to 14.6% for Cook County.
- 29.1% of households do not have a broadband Internet subscription.



Library Use Highlights

- 59% of Chicago Ridge households have at least one Chicago Ridge Public Library cardholder.
- In 2018, 103,909 people visited the library and 14,547 people attended over 863 programs.
 - Youth programming and attendance has increased yearly since 2016. In 2018, 9900 kids and teens attended programs at the library, an increase of 35% from 2017. The library surpassed 2019 youth attendance in October and expects a 17% increase for 2019.
 - Our visitor count is on track to increase 10% in 2019.
 - Adult programming has seen a 15% increase in 2019.
- The library's two large (up to 10-person) study rooms were used 2,202 times by the public in 2018 and have seen a 21% increase in use in 2019.
- Community bookings of the library's large meeting room have more than doubled in 2019 with 65 bookings through October.
- Internet sessions increased 10% from 2017 (16,613) to 2018 (18,322) and are up another 6% in 2019.
- WiFi sessions are on pace to increase 19% in 2019 from 10,434 sessions in 2018.

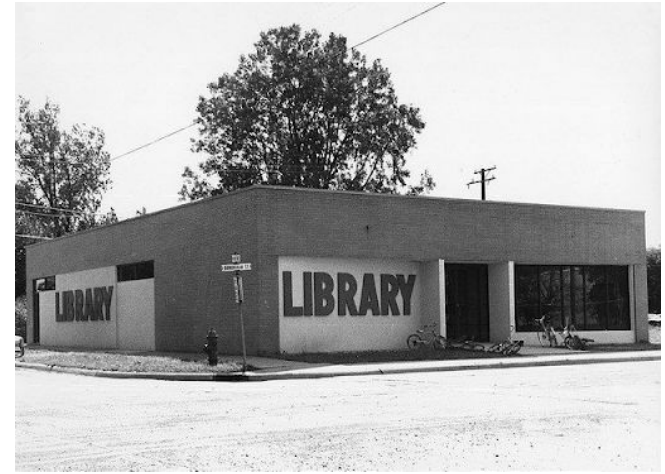
Library Use Highlights *continued*

- Chicago Ridge Public Library maintains a physical collection of over 70,000 items that circulated 128,019 times in 2018.
 - Reciprocal borrowers make up 20% of our circulation.
- The library is open seven days a week (September-May), with 68 hours of service per week.
- The Chicago Ridge Public Library is a member of RAILS and the SWAN consortium.

Chicago Ridge Public Library Space Needs Assessment

Library Building

- The current library building started as a 4,000 square foot building in 1979.
- In 1983, the library added a 4,000 square foot addition.
- In 2001 the library added a 10,000 square foot addition to the building to create the existing 18,000 square foot building.
 - The library is a single story with an open floor plan, 2 large study rooms, and a large meeting room with can accommodate up to 80 people.
 - The building has had minimal updates since 2001. Furniture and flooring are worn and outdated.
 - The library can't expand or add a 2nd floor. Renovation is the only option to maximize efficient use of space to improve patron experience and meet community needs.



User, Community, & Staff Feedback

In 2018-19, the Chicago Ridge Public Library surveyed library users, community stakeholders, and library staff to gain insights on what improvements need to be made to the library, including its physical condition and spaces.

HIGHLIGHTS

Library user feedback

- Building needs to be updated & modernized
- Program room is very dark and dreary
- Kids area needs a makeover
- Create a quieter place for adults away from children

Community stakeholder survey/conversations

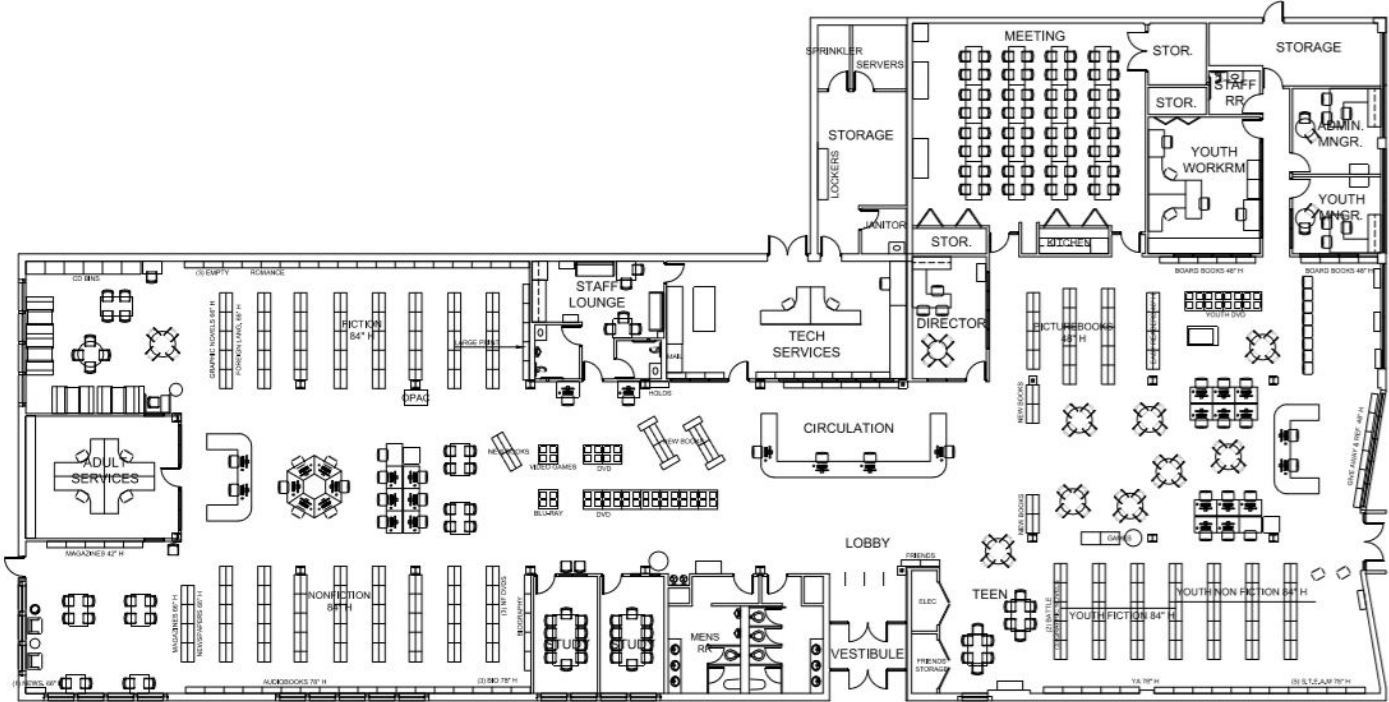
- 1-2 person study rooms
- Update meeting room

Library staff survey

- Outdated
- Sound travels
- Not enough study rooms



Current library floor plan challenges

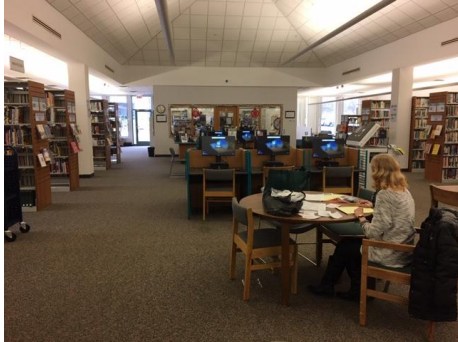


Current library floor plan challenges - Circulation

- Massive, imposing circulation desk takes up valuable space
- Self checks are hidden
- Limited display for new materials
- Outdated restrooms that always look dirty



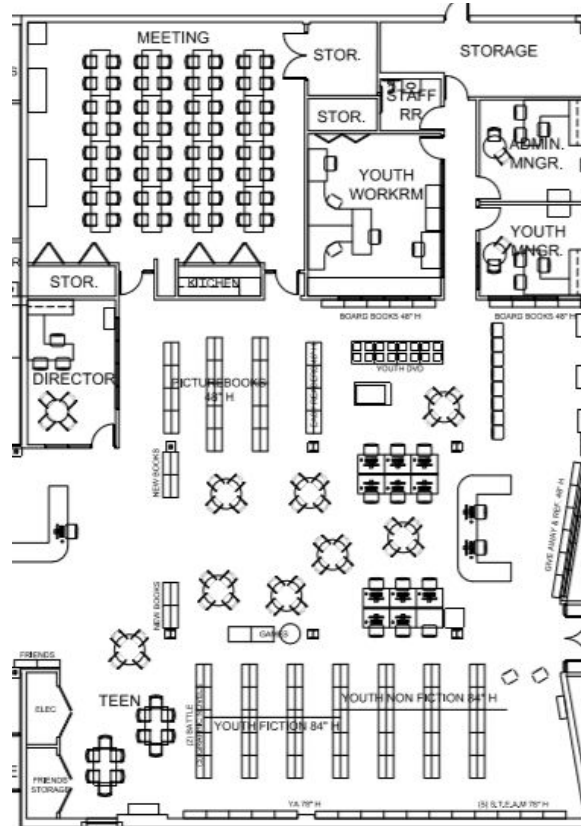
Current library floor plan challenges - Adult Services



- Adult Services workroom blocks natural light from south windows entering the space
- Computers take up valuable real estate and wiring is dangerous
- Power is either unavailable or difficult to get to for patrons
- Furniture is worn and outdated
- No comfortable, lounging furniture
- Noise travels from Youth Services
- Need more quiet places to study
- Approximately $\frac{1}{5}$ of collection hasn't circulated in over 5 years

Current library floor plan challenges - Youth Services

- Shelving and youth services desk take up prime real estate in front of windows
- Need face out display for picture books
- Institutional meeting room
- Regular large youth programs too big for meeting room
- Need flexibility to accommodate children's programs
- Need space to accommodate after school kids



Challenges continued

In April 2019, the Library Board reached out to area architects to redesign the library based on the following focus areas and issues with a maximum budget of \$1.4 million to be funded from the library's Special Reserve Fund.

Focus Areas/Issues

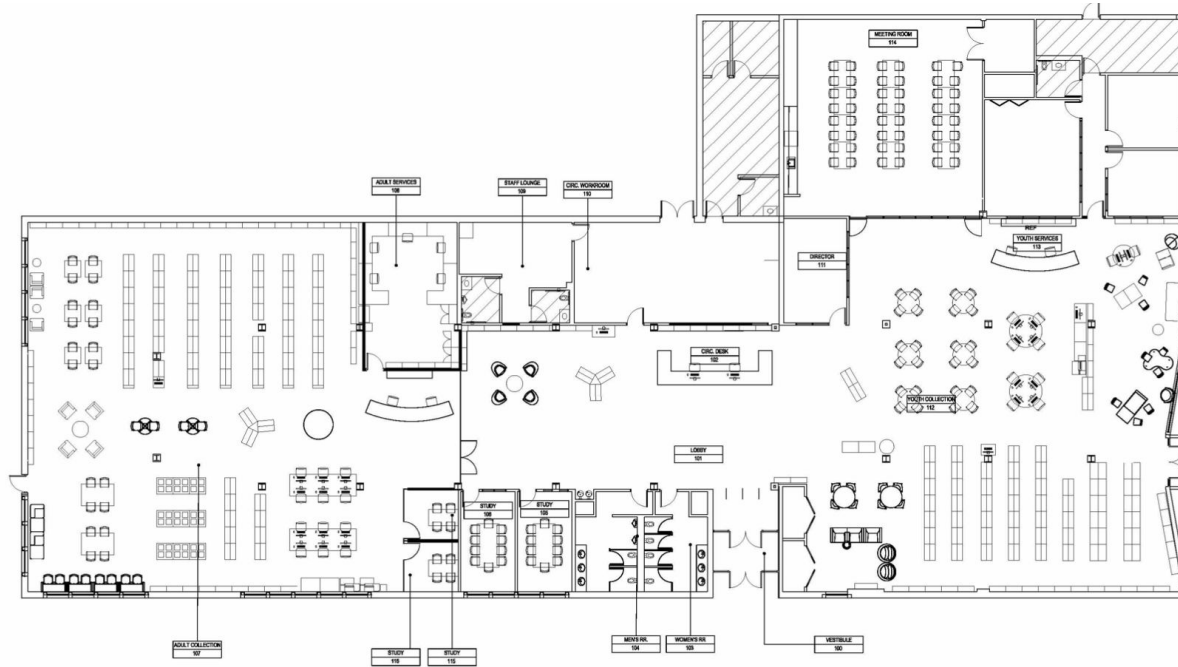
- Public service desks are imposing and take up valuable space
- Better utilization of space within departments with emphasis on flexibility
- Delineation of quiet/social spaces
- Need more/smaller study rooms
- Institutional meeting room
- Outdated restrooms that always look dirty
- Worn and outdated furniture, carpeting and walls
- Access to power across library

Chicago Ridge Public Library

Project Design - Recommendations

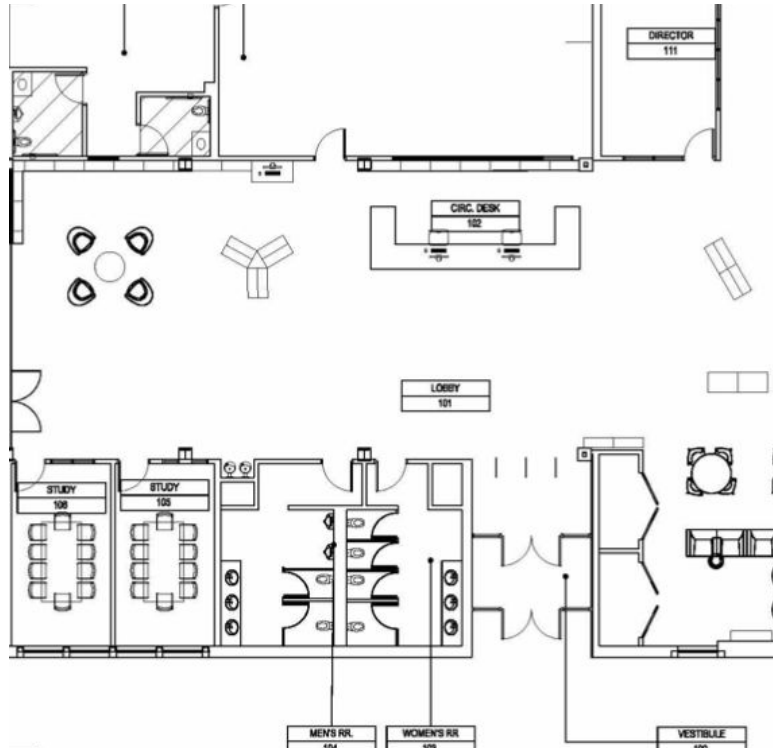
Recommendations

In June 2019, the Library Board hired Product Architecture + Design, to create a plan for the renovation. The Board approved the following plan at its November board meeting.



FLOOR PLAN: NEW

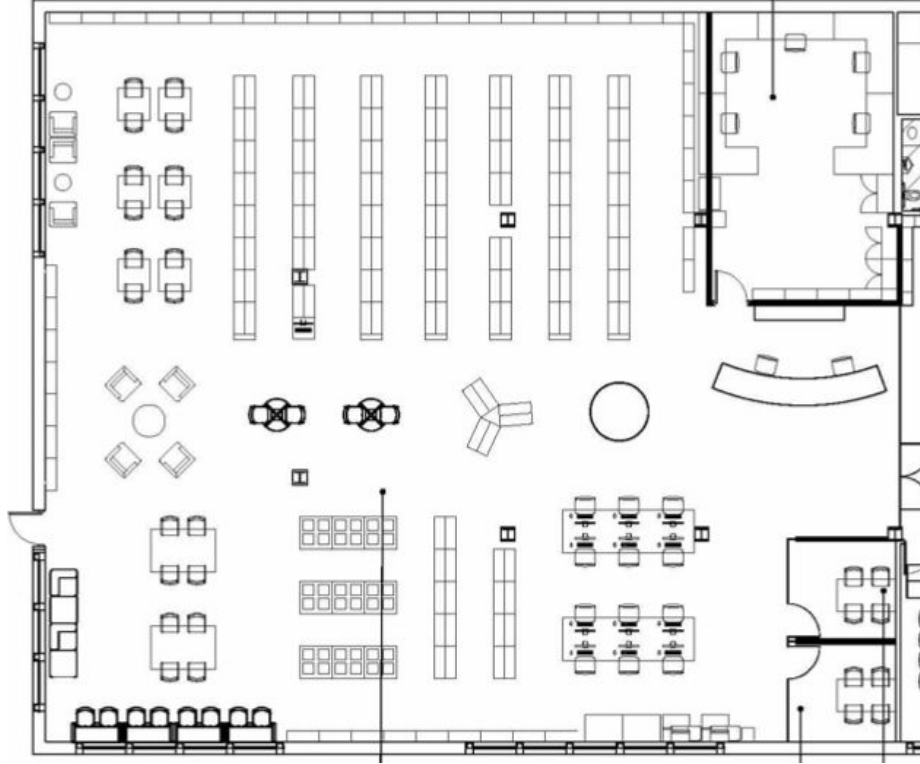
Recommendations - Circulation



Create a Welcoming Circulation/Lobby Area

- Smaller, less imposing desk
- New comfortable seating to relax, socialize and read
- New book displays for browsing
- Self checkout station
- Updated restrooms

Recommendations - Adult Services



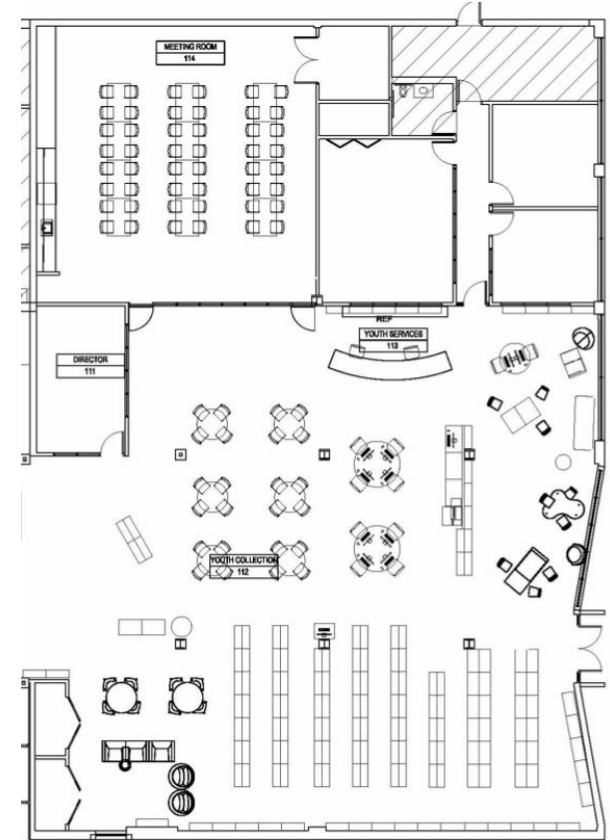
A Quiet, Light Filled Adult Services Room

- Create an enclosed Adult Services room to control noise from Youth Services
- Relocate Adult Services workroom to allow natural light into public spaces
- Add an additional two small study rooms for more quiet study
- New computer space with hidden wiring
- Lots of seating with both comfortable chairs for reading and tables for studying/working
- Weeding “dead” books from the adult materials collection

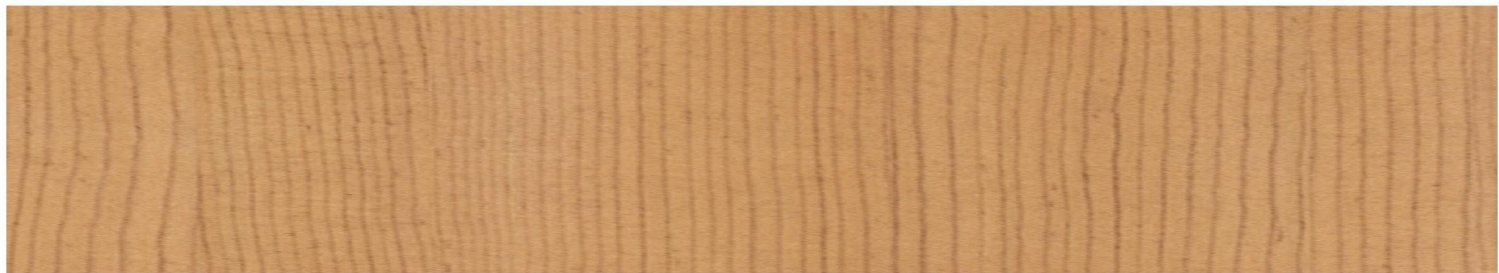
Recommendations - Youth Services

Flexible Youth Services Department with Light Filled Play Area

- Move Youth Services desk from windows
- Create an open, light-filled play space for younger children
- New faceout shelving
- A flexible meeting/program room with storage for programming supplies and equipment
 - Sliding glass wall allows the library to open the program room for more space to accommodate after school crowds and older teens
 - Sliding glass wall makes room for large children's programs to expand into youth services department
- Updated tween area with fun, comfortable furniture



Chicago Ridge Public Library Project Design - Renderings



PALETTE



CARPET PLAN



LOBBY/ CIRCULATION



TOWARDS ADULT



ADULT LOOKING SOUTH



STUDY ROOMS



ADULT SOUTHWEST CORNER



VIEW FROM LOBBY INTO YOUTH



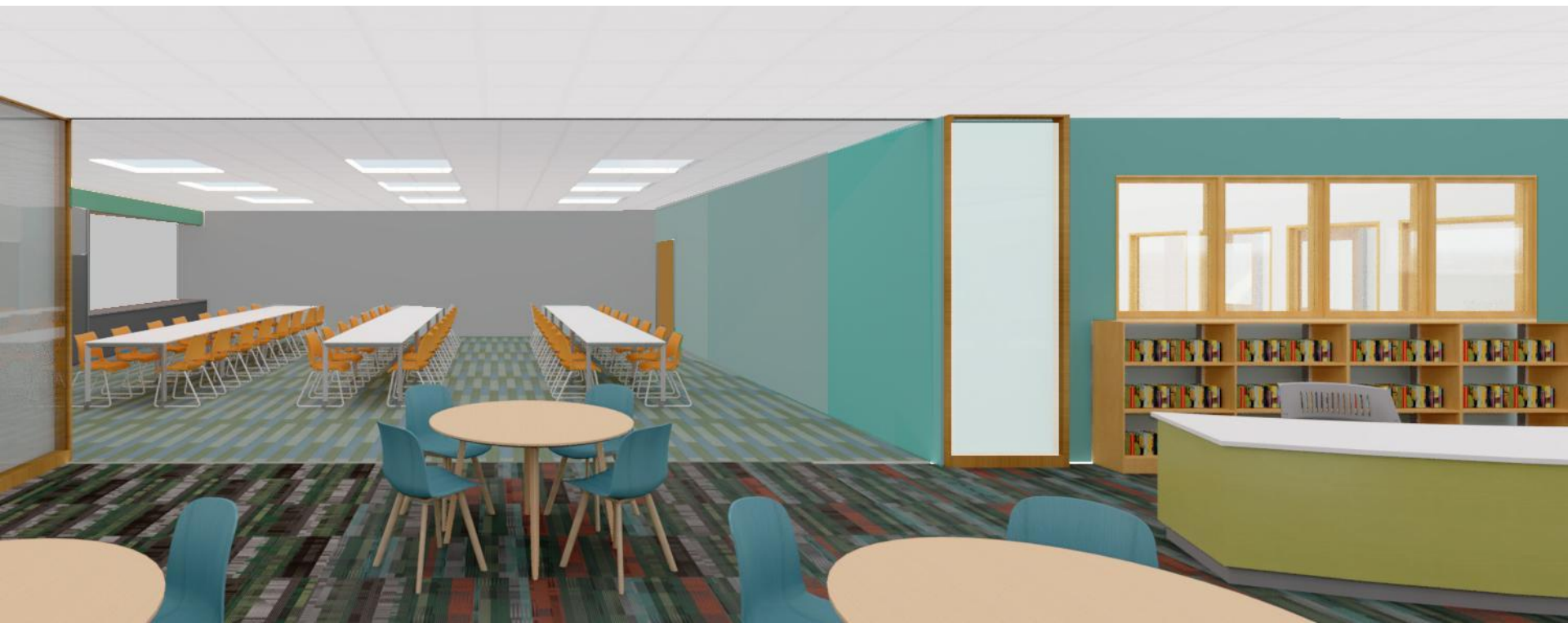
VIEW FROM YOUTH DESK



EARLY LEARNING



NANAWALL CLOSED



PROGRAM ROOM OPEN



PROGRAM ROOM